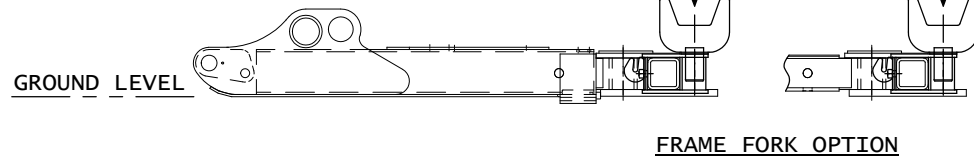
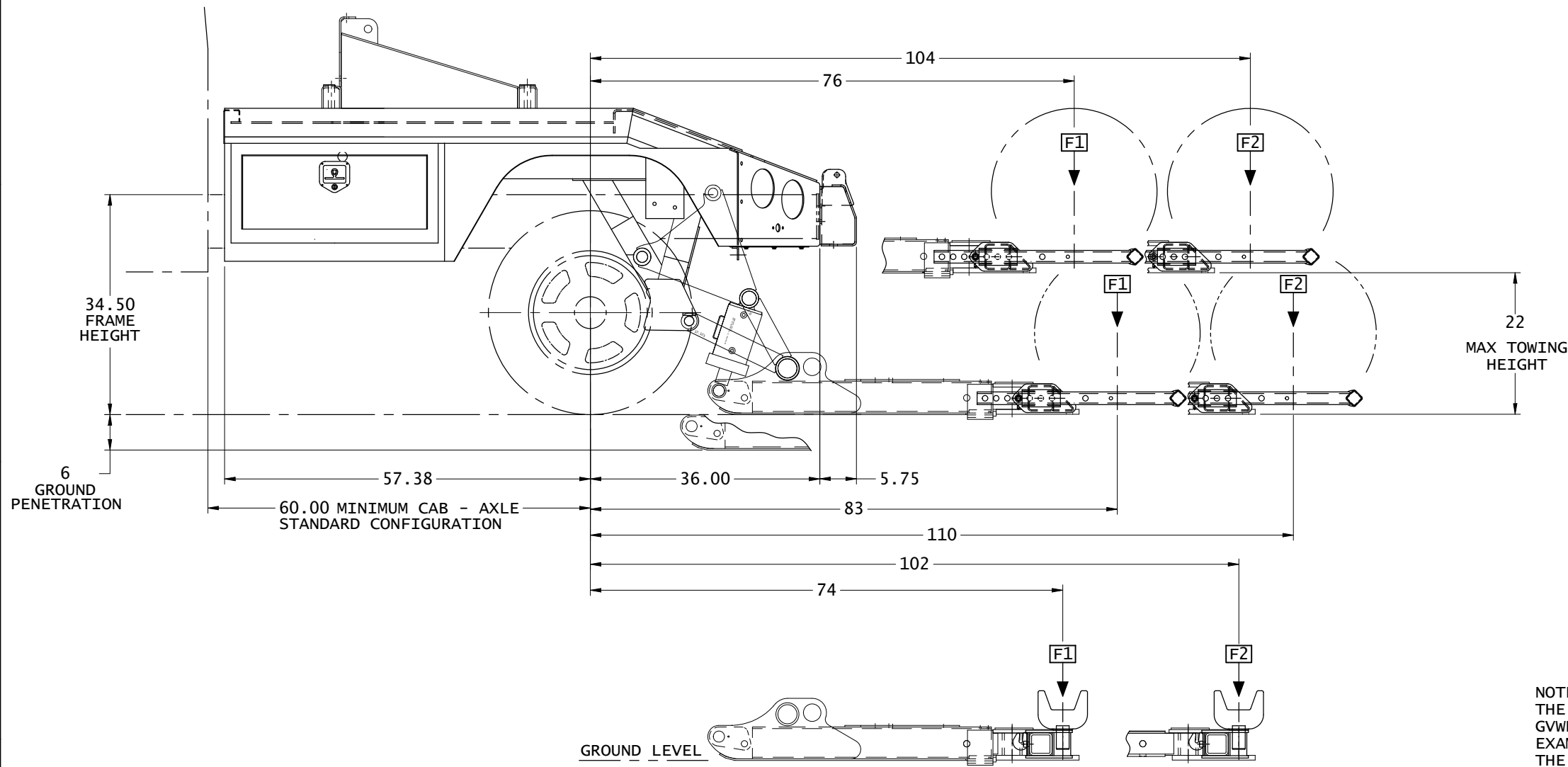


STANDARD U/L MECHANISM

FOR FRAME HEIGHTS
LESS THAN 37"



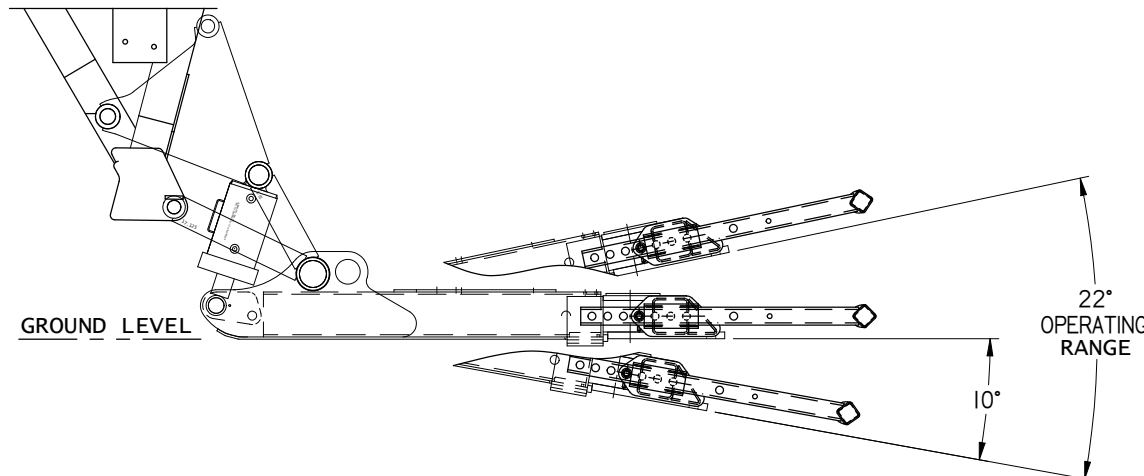
NOTES:

1. ALL DIMS SHOWN ARE BASED ON AN AVERAGE CHASSIS FRAME HEIGHT OF 34.50". DIMENSIONS WILL VARY FOR DIFFERENT CHASSIS.
2. CHASSIS WITH A FRAME HEIGHT OF 37" - 41" WILL REQUIRE A LOWER MECHANISM, SEE SHEET 2 FOR DIMS.
3. L-ARMS SHOWN, DIMENSIONS MAY VARY SLIGHTLY FOR T-37 MANUAL PIVOTING GRID CONFIGURATION

MAXIMUM U/L LIFTING CAPACITIES			
LIFTING POSITION	L-ARM GRIDS	T-37 MANUAL PIVOTING GRIDS	FRAME FORKS
F1	3,500 lbs	4,000 lbs	4,000 lbs
F2	3,500 lbs	4,000 lbs	4,000 lbs

NOTE:

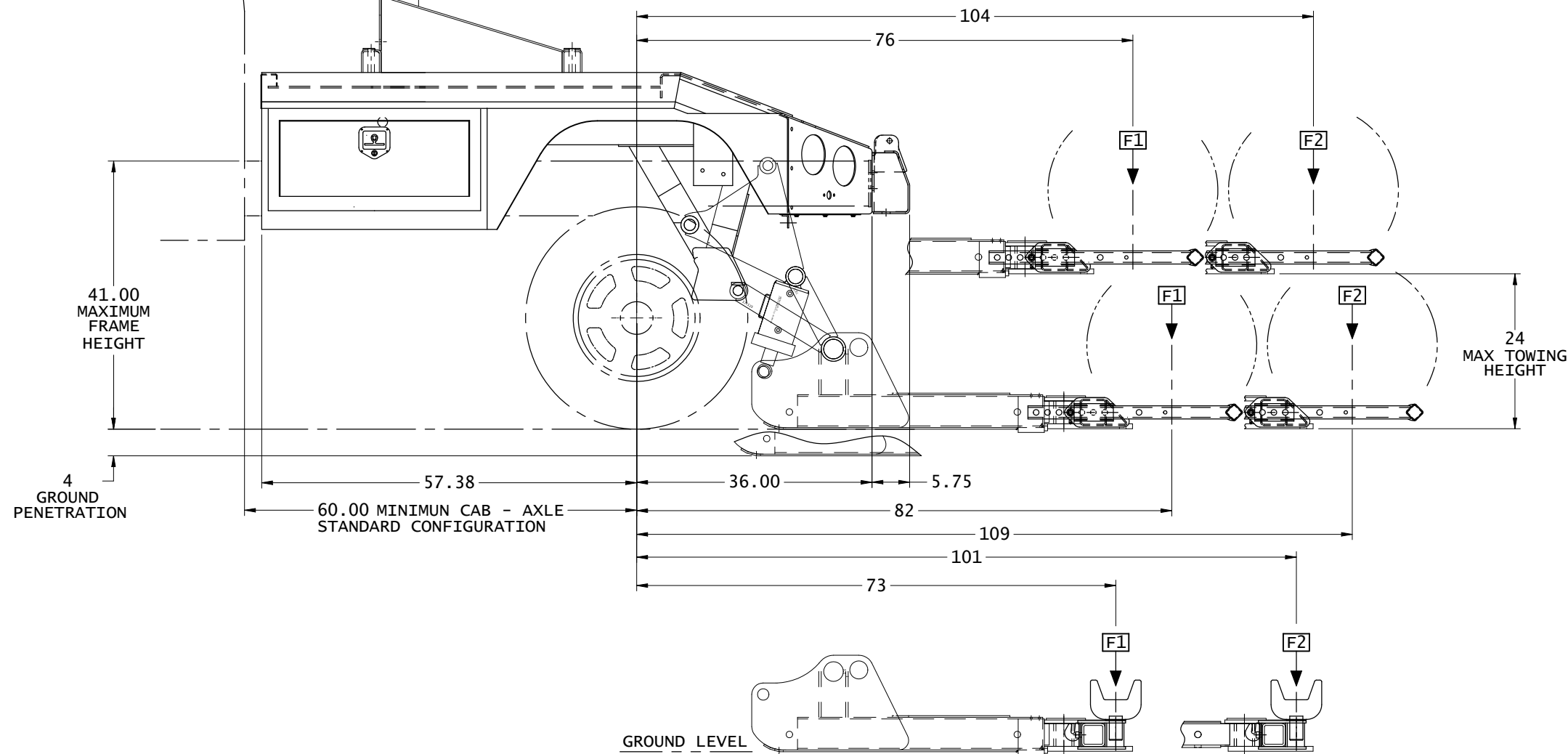
THE TOW RATING OF THE RECOVERY EQUIPMENT IS LIMITED TO THE ACTUAL GVWR (GROSS VEHICLE WEIGHT RATING) OF THE RECOVERY VEHICLE. FOR EXAMPLE, THE GVWR OF THE RECOVERY EQUIPMENT SHOULD NOT BE EXCEEDED BY THE GCW (GROSS COMBINED WEIGHT) OF BOTH TOWING AND TOWED VEHICLES. THIS IS THE ACTUAL WEIGHT OF THE TOWING VEHICLE PLUS THE TOWED VEHICLE(S) INCLUDING LOAD, DRIVER, PASSENGER(S), AND FUEL. (EVERYTHING THAT MOVES WITH THE EQUIPMENT.)



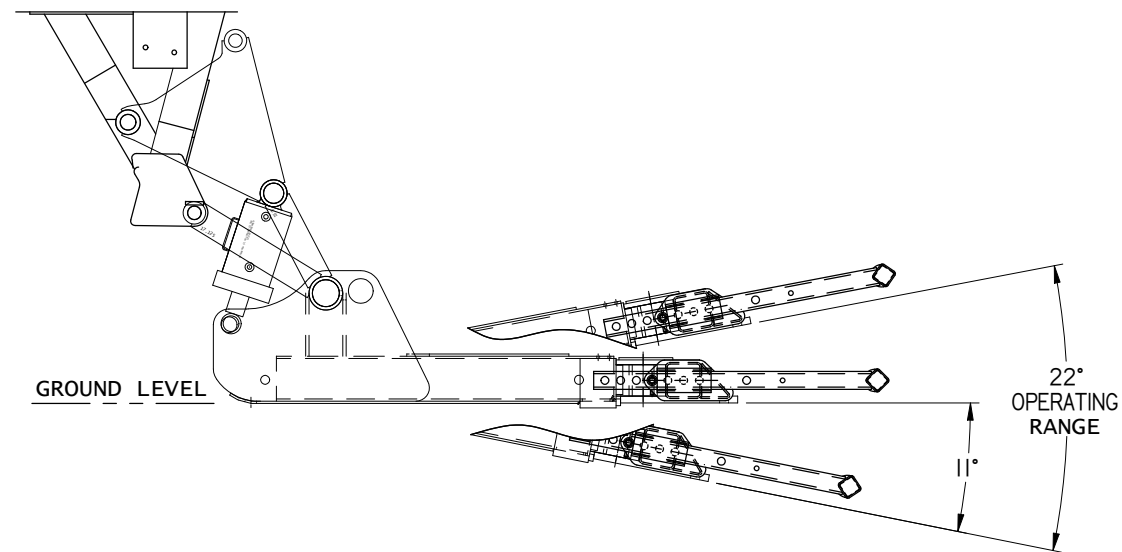
CHASSIS REQUIREMENTS				
MIN GVWR	MIN CA OR CB/CT (ALLOWS 2" CLEARANCE BETWEEN CAB & BODY)	MIN RBM	MIN FRAME LENGTH BEHIND REAR MOST AXLE	MAX FRAME HEIGHT
10,500	60	230,000	36	41
RECOMMENDED				
15,000	60	500,000	36	34-38

LOWER U/L MECHANISM

FOR FRAME HEIGHTS
37 - 41 INCHES



FRAME FORK OPTION



<p>PROPRIETARY AND CONFIDENTIAL INFORMATION: THIS DRAWING AND SUBJECT MATTER CONTAINED ARE THE SOLE AND EXCLUSIVE PROPERTY OF JERR-DAN CORPORATION. THIS COPY IS LOANED WITH THE UNDERSTANDING THAT IT OR THE SUBJECT MATTER CONTAINED WILL NOT BE DISCLOSED TO ANY OTHER PARTY WITHOUT THE EXPRESS WRITTEN PERMISSION OF JERR-DAN CORPORATION. ACCEPTANCE OF THIS COPY SHALL BE CONSTRUED AS ACCEPTANCE OF THE FORGING CONDITION.</p>	<p>IF IN DOUBT ASK. DO NOT SCALE DRAWING. REMOVE ALL BURRS AND SHARP CORNERS.</p>	<p>TOLERANCES UNLESS OTHERWISE SPECIFIED 2 PLACE DEC ±0.062 3 PLACE DEC ±0.015 ANGLE DIM ±0.5° N/A TO MATERIAL THICKNESS</p>	<p>MAT'L ~ SHEET 2 OF 3</p>	
			<p>WEIGHT ? #</p>	
<p>TITLE HPL-35 DIMENSIONAL SPECIFICATIONS</p>			SCALE 0.09	ERN ~
DATE 7/24/2000	DRAWN RMF	SIZE D	DWG NO 5-836-000026	REV

REV	ZONE	ERN	DESCRIPTION	DATE	BY

HPL-35 DIMENSIONAL SPECIFICATIONS

DWG NO 5-836-000026 REV

WINCH OPTIONS (4 TON BOOM)	
SINGLE 8,000 LB. WORM GEAR WINCH	3/8 DIA x 100 FT 6 x 37 IPS FIBRE CORE, DRAWN GALVENIZED CABLE (NOM BREAKING STRENGTH - 12,200 lbs, WORKING LOAD LIMIT - 3485 lbs)
WINCH OPTIONS (8 TON BOOM)	
SINGLE OR DUAL 8,000 LB. WORM GEAR WINCH	3/8 DIA x 100 FT 6 x 37 IPS FIBRE CORE, DRAWN GALVENIZED CABLE (NOM BREAKING STRENGTH - 12,200 lbs, WORKING LOAD LIMIT - 3485 lbs)
WINCH OPTIONS (12 TON BOOM)	
SINGLE OR DUAL 10,000 LB. WORM GEAR WINCH	7/16 DIA x 100 FT 6 x 37 IPS FIBRE CORE, DRAWN GALVENIZED CABLE (NOM BREAKING STRENGTH - 16,540 lbs, WORKING LOAD LIMIT - 4,725 lbs)
DUAL 12,000 LB WORM GEAR WINCHES	1/2 DIA x 200 FT 6 x 37 EIPS STEEL CORE, DRAWN GALVENIZED CABLE (NOM BREAKING STRENGTH - 26,600 lbs, WORKING LOAD LIMIT - 7,600 lbs)

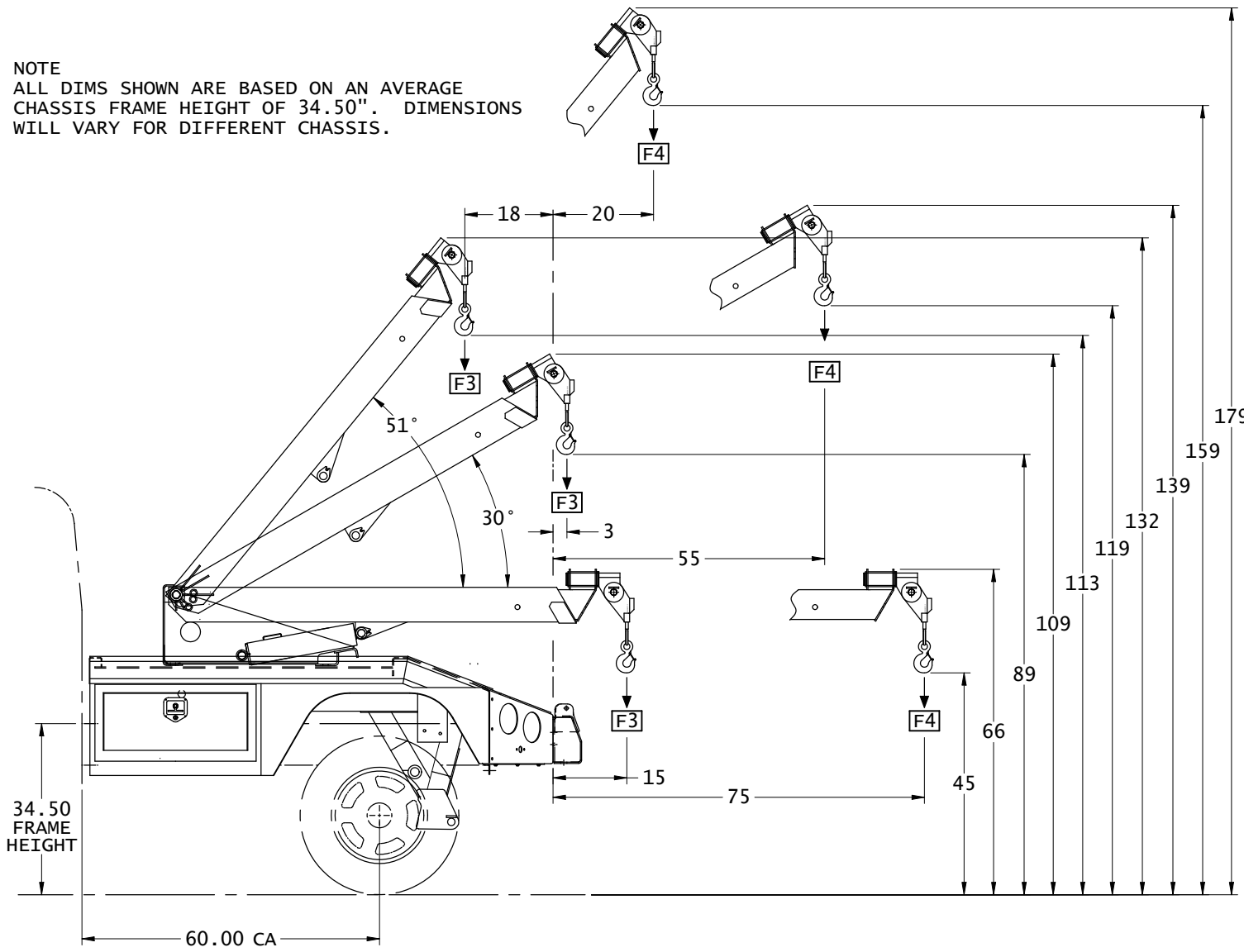
NOTE:
WINCHING CAPACITY IS LIMITED TO THE WORKING LOAD LIMIT OF THE WIRE ROPE/CABLE.

THE WORKING LOAD LIMIT OF WIRE ROPE/CABLE IS DETERMINED BY DIVIDING THE NOMINAL PUBLISHED BREAKING STRENGTH BY A DESIGN FACTOR 3.5 (SEE ABOVE CHART). DO NOT EXCEED THE WORKING LOAD LIMIT OF THE WIRE ROPE/CABLE. USE MULTIPLE LINES AND SNATCH BLOCKS TO ACHIEVE REQUIRED LOADS.

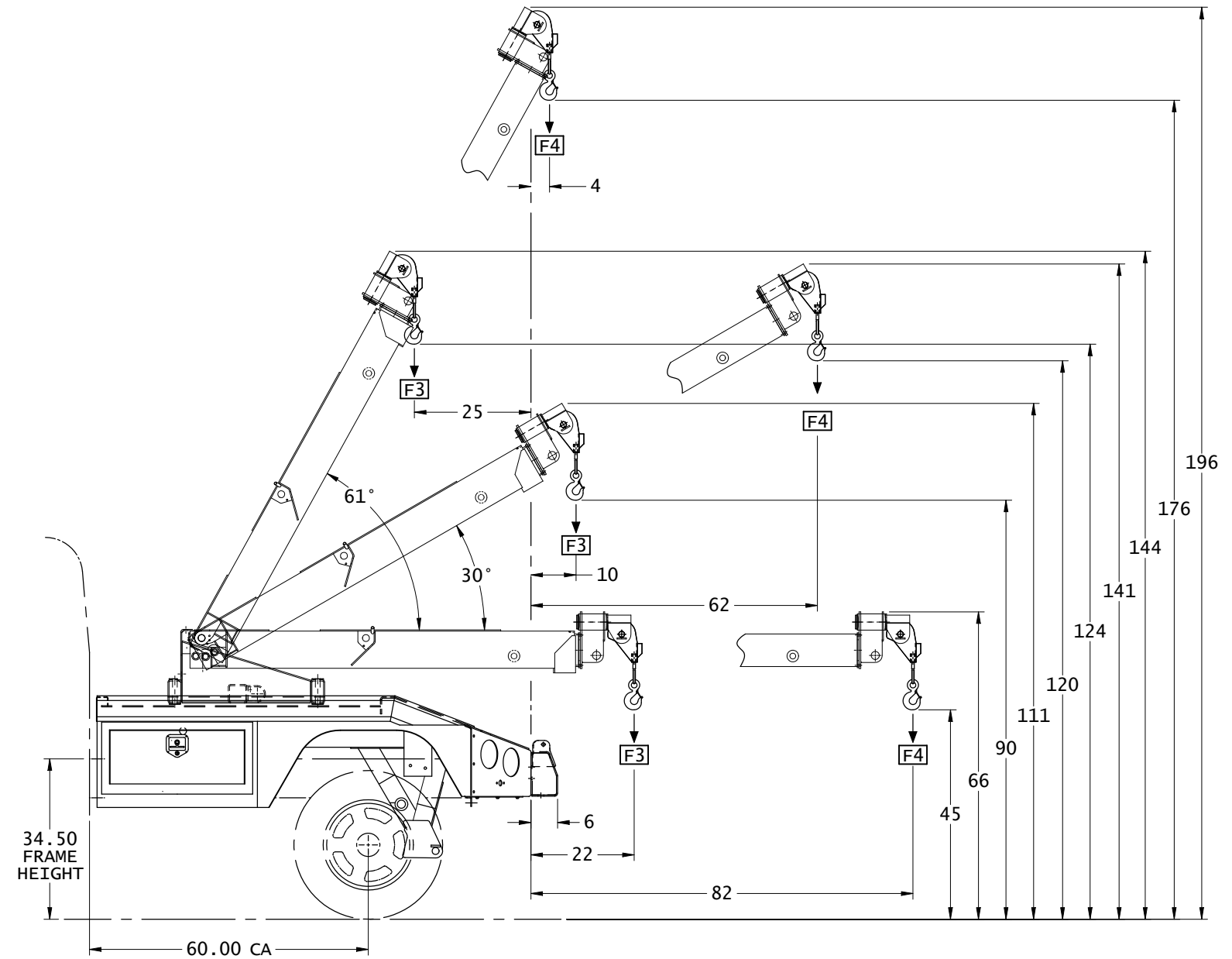
WINCHES MEET SAE J706 RATING OF WINCHES.

LOAD RATINGS		
RATING @ 30 DEG BOOM ANGLE PER SAE J2512		
4 TON BOOM	F3	8,000 LBS
	F4	2,500 LBS
8 TON BOOM	F3	18,500 LBS
	F4	7,000 LBS
12 TON BOOM	F3	24,000 LBS
	F4	8,000 LBS

NOTE
ALL DIMS SHOWN ARE BASED ON AN AVERAGE CHASSIS FRAME HEIGHT OF 34.50". DIMENSIONS WILL VARY FOR DIFFERENT CHASSIS.



4 TON WRECKER BOOM OPTION



8 & 12 TON WRECKER BOOM OPTION

PROPRIETARY AND CONFIDENTIAL INFORMATION:
THIS DRAWING AND SUBJECT MATTER CONTAINED ARE THE SOLE AND EXCLUSIVE PROPERTY OF JERR-DAN CORPORATION. THIS COPY IS LOANED WITH THE UNDERSTANDING THAT IT OR THE SUBJECT MATTER CONTAINED WILL NOT BE DISCLOSED TO ANY OTHER PARTY WITHOUT THE EXPRESS WRITTEN PERMISSION OF JERR-DAN CORPORATION. ACCEPTANCE OF THIS COPY SHALL BE CONSTRUED AS ACCEPTANCE OF THE FORGING CONDITION.

IF IN DOUBT ASK. DO NOT SCALE DRAWING. REMOVE ALL BURRS AND SHARP CORNERS.
TOLERANCES UNLESS OTHERWISE SPECIFIED
2 PLACE DEC ±0.062
3 PLACE DEC ±0.015
ANGLE DIM ±0.5°
N/A TO MATERIAL THICKNESS

JERR-DAN
An Oakleaf Truck Corporation Company
SHEET 3 OF 3
WEIGHT ? #
TITLE HPL-35 DIMENSIONAL SPECIFICATIONS
SCALE 0.09
DATE 7/24/2000
DRAWN RMF
D 5-836-000026
REV

REV	ZONE	ERN	DESCRIPTION	DATE	BY